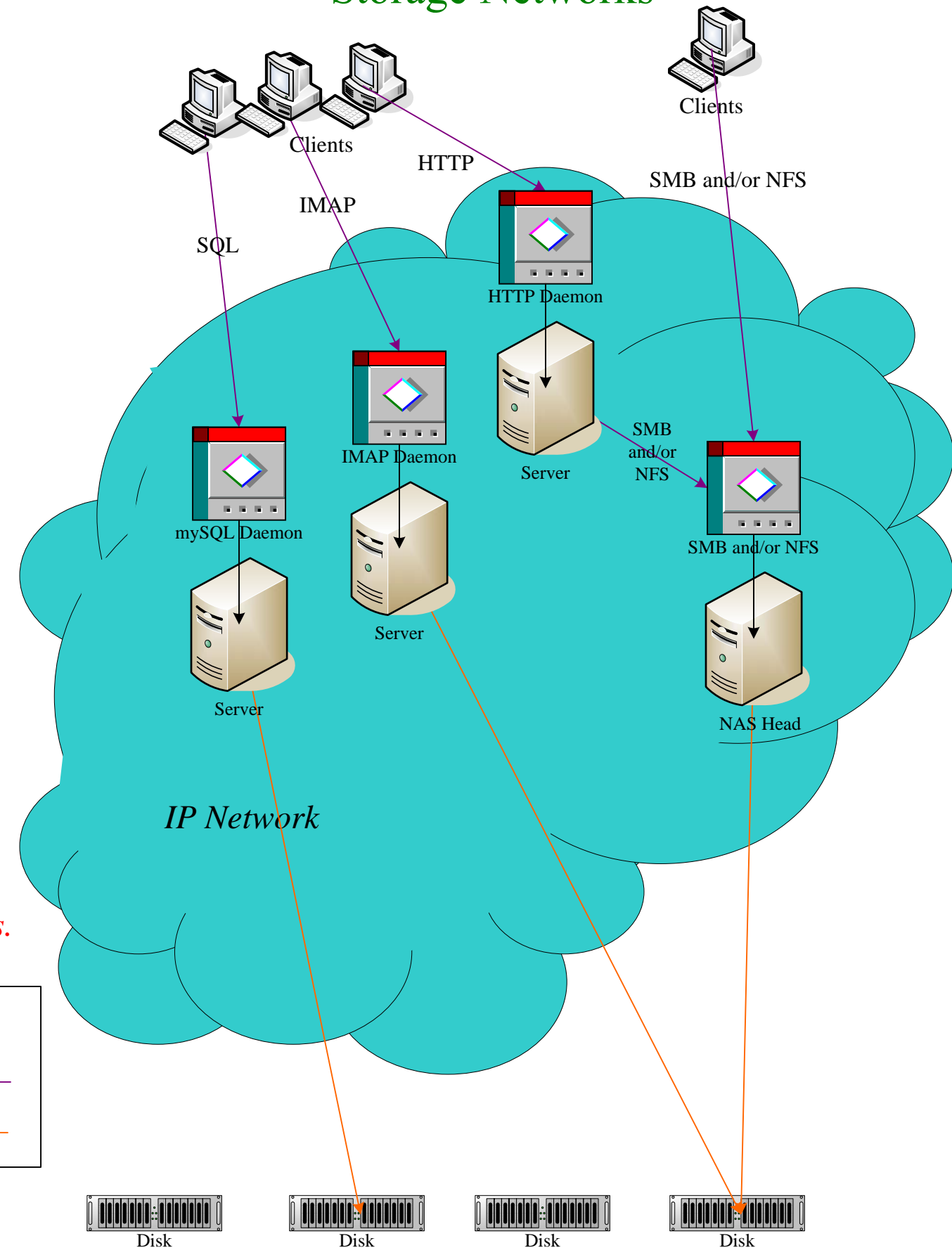
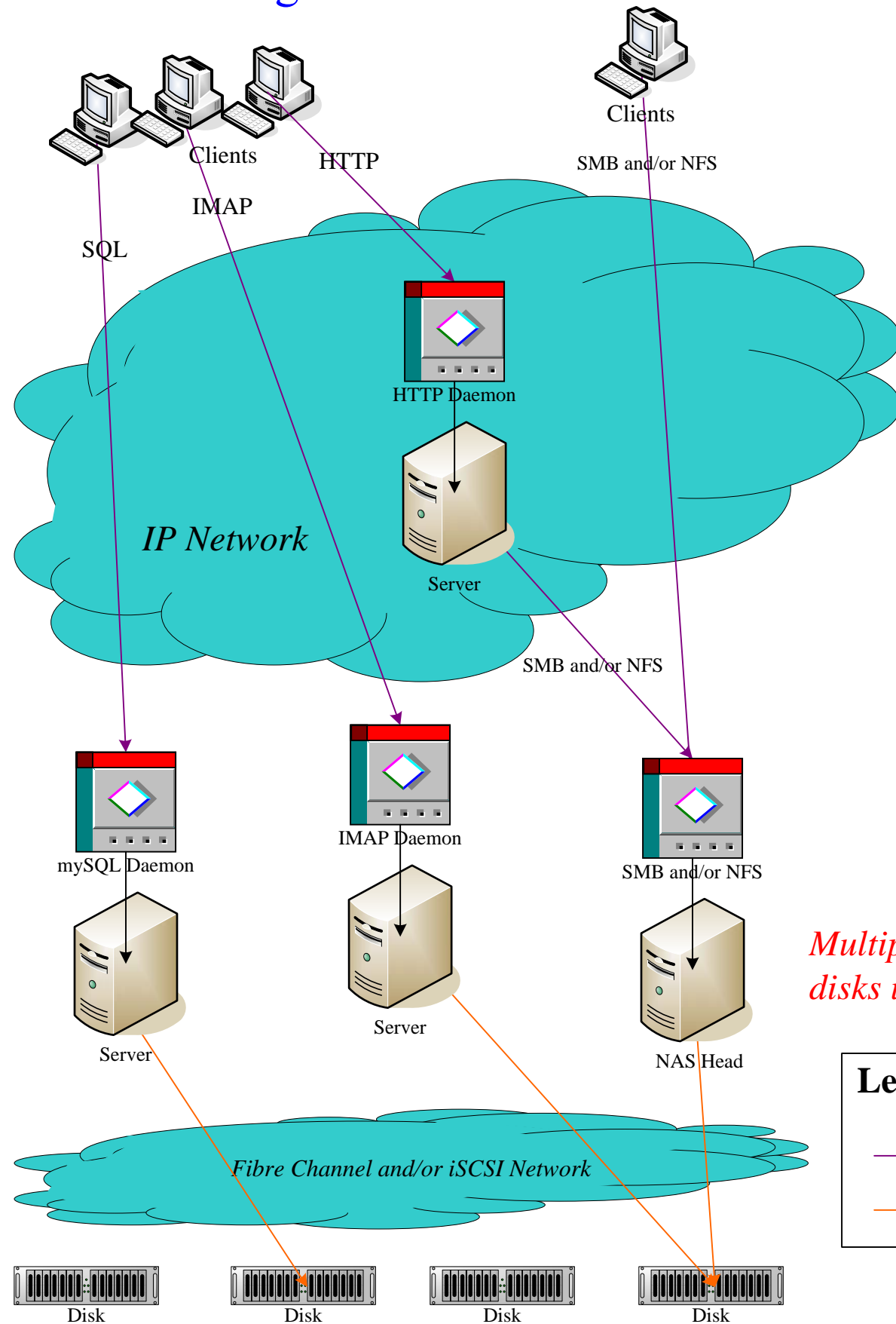


# Parallel Application & Storage Networks

# SAN Flavors

# Converged Application & Storage Networks



*Multiple servers access multiple disks using block-level protocols.*

**Legend**

— TCP or UDP conversation —

— Virtual SCSI Cable (SCSI/Fibre Channel or iSCSI) —

To reach the disk, applications can be loaded on any server. Applications loaded onto servers attached to the FC/iSCSI network gain block-level access to the disk. Applications loaded onto servers attached only to the IP network gain file-level access to the disk, via the NAS Head.

To reach the disk, applications can be loaded on any server. Applications gain block-level or file-level access by configuration rather than by topology. Servers which want block-level access must be equipped with an iSCSI NIC. Servers may forward both iSCSI and application traffic over the same NIC. Alternatively, servers may be equipped with two NICs, one carrying iSCSI traffic and the other carrying application traffic.